



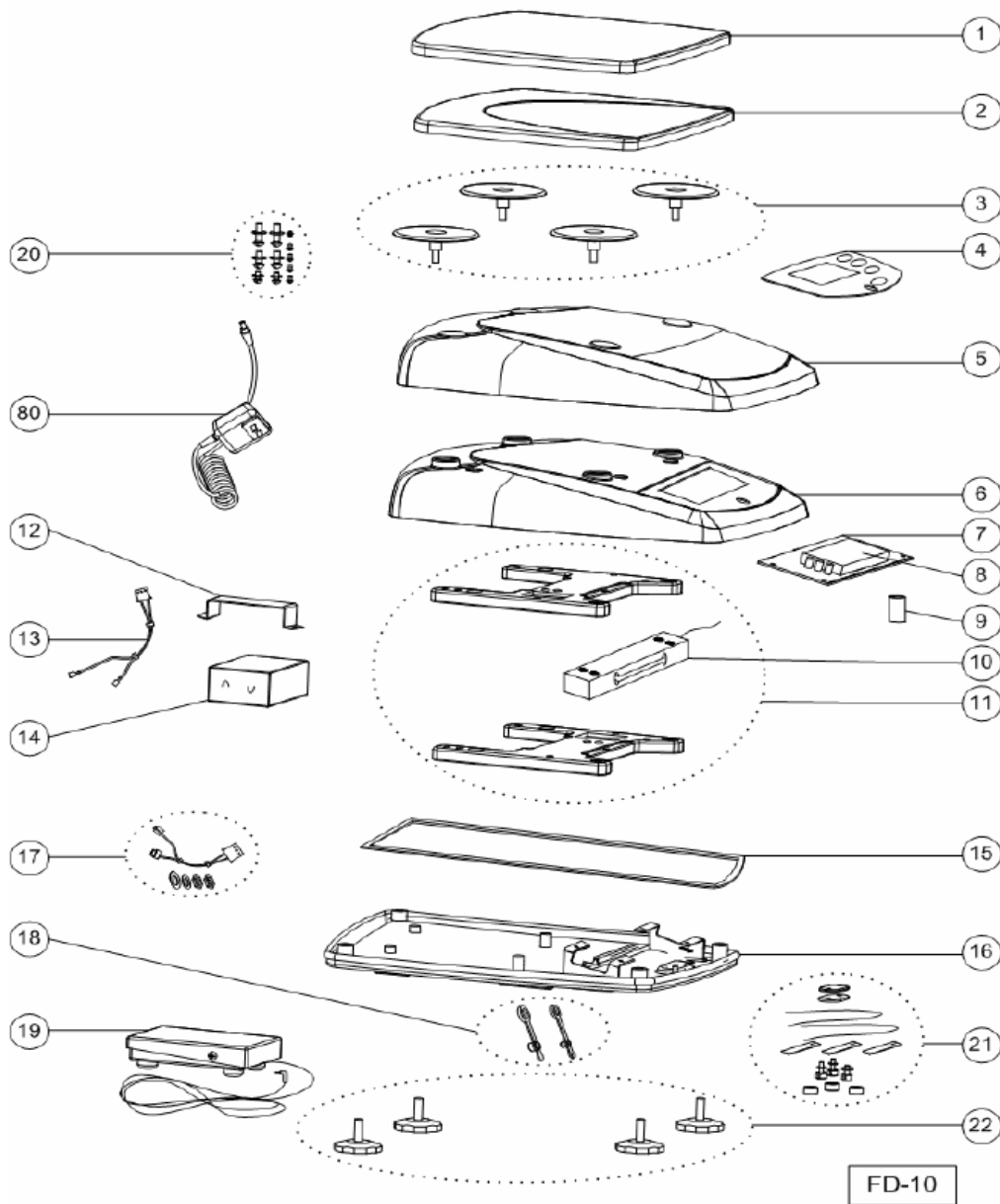
AfterMarket
Parts • Service • Support • Accessories

Service Parts List

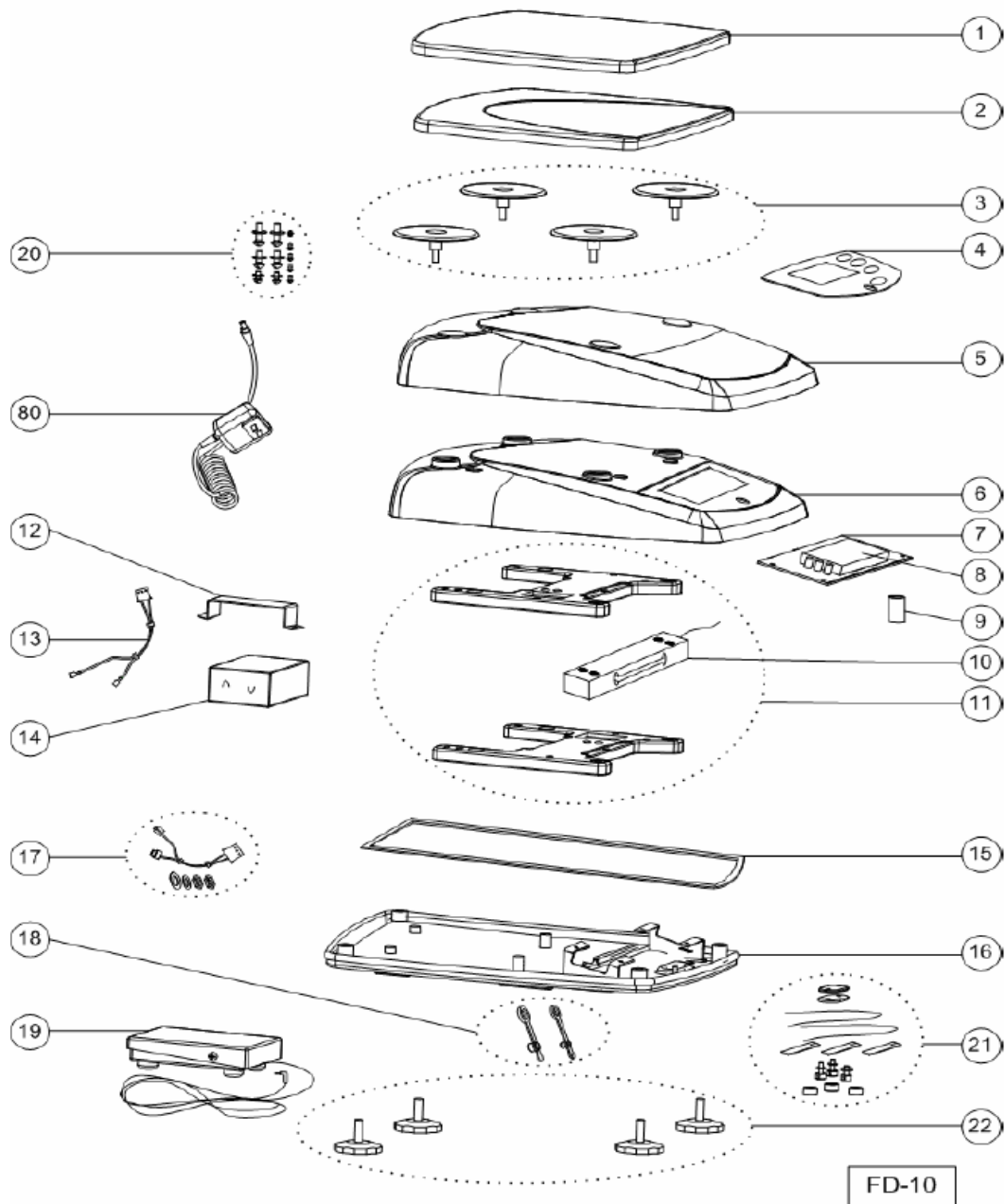
Click on the model being serviced

FD3	FD3-M	FD3H
FD6	FD6-M	FD6H
FD15	FD15-M	FD15H
		FD30H

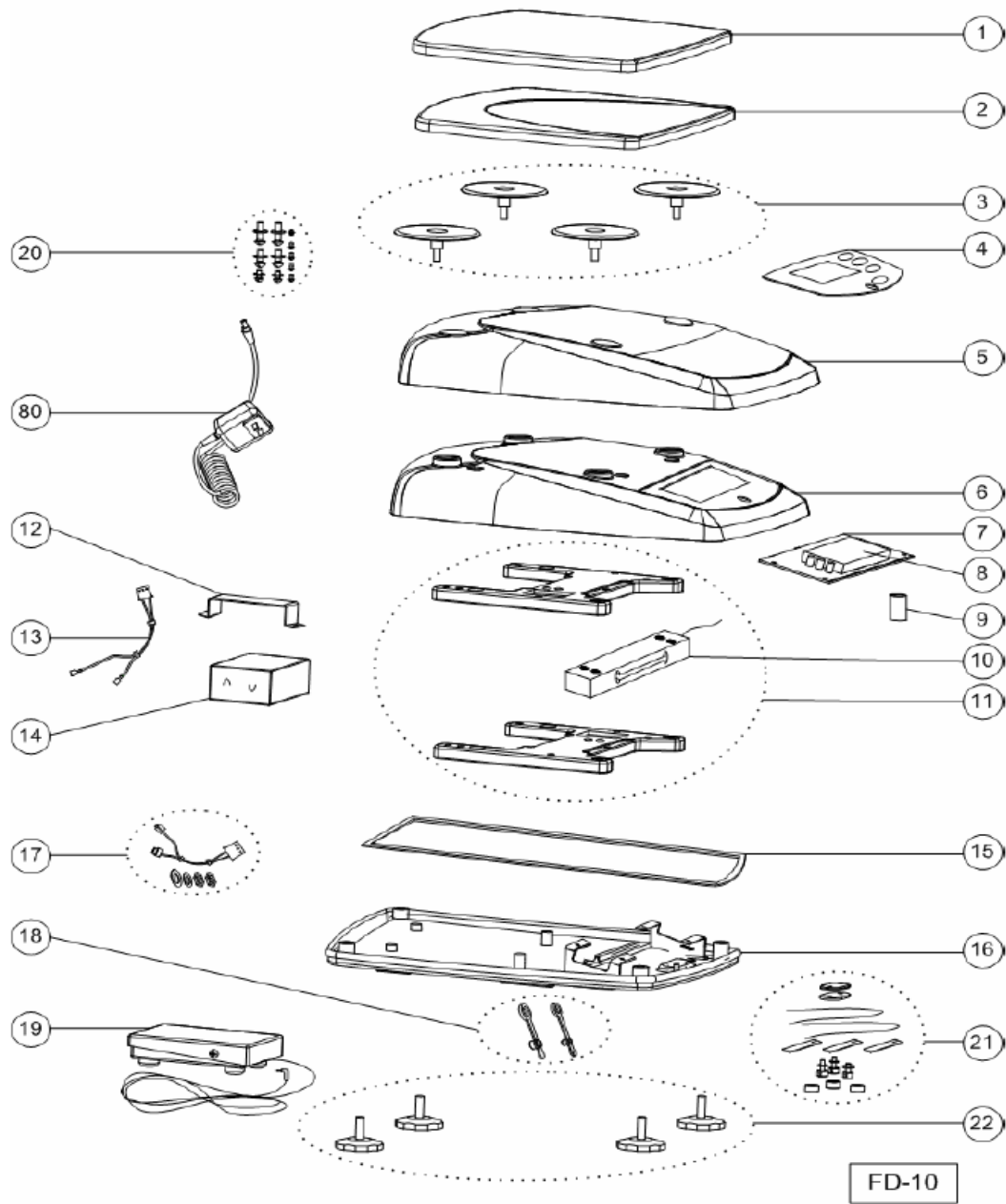
Note: In one box, all models are using same spare part



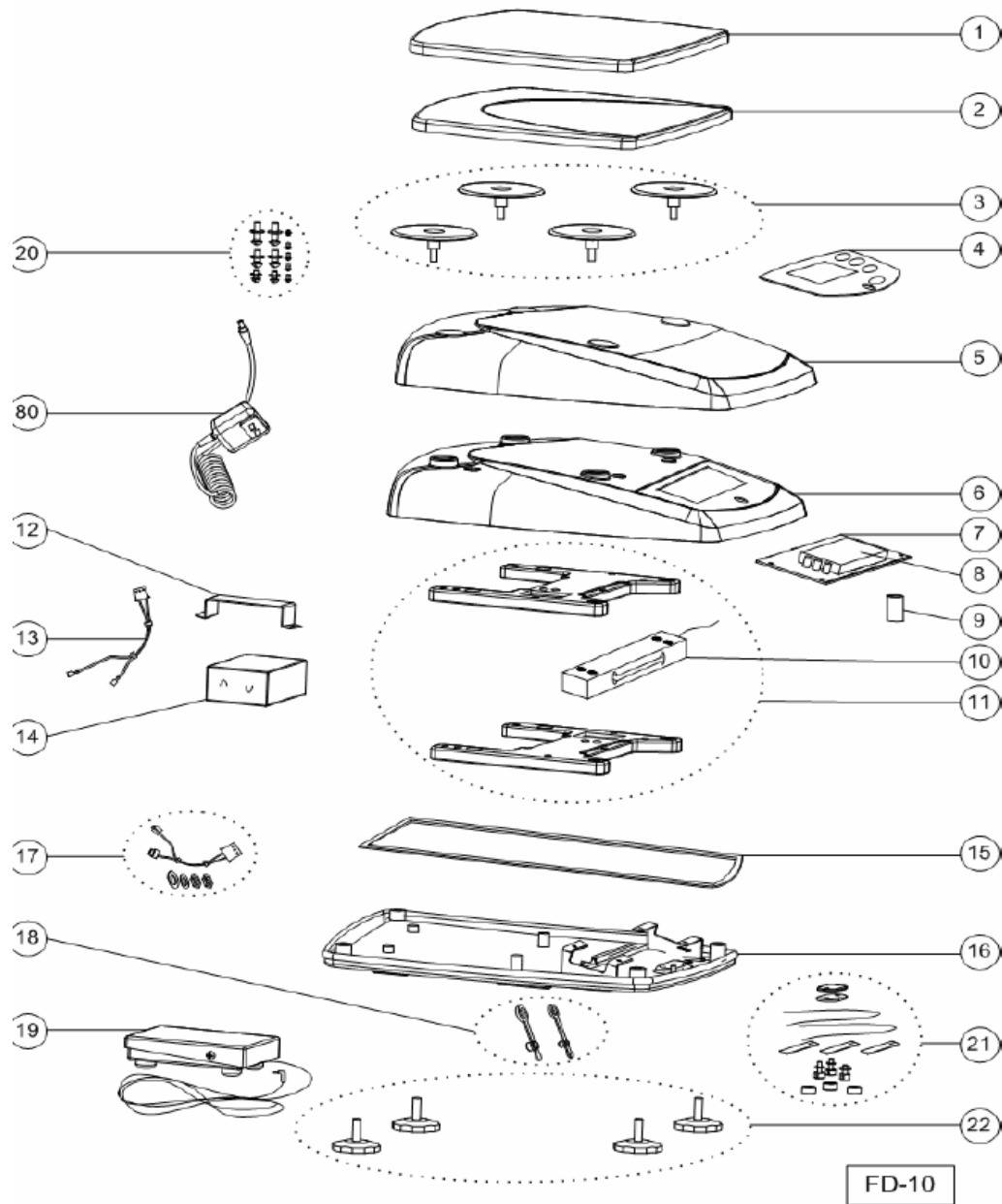
Drawing Item	Part Number	Description
1	80251141	Accessory, Pan, FD,V51
3	71172940	Pan Support caps(4), FD,V51
4	71169710	Switch, Membrane, FD
5	80251140	Accessory, Cover, In-Use, V51/FD
6	71172932	Hsg, Top, w/Membrane Switch, FD
7	71158350	PCB, Main, FD,V51
8	71158347	LCD Display, FD,V51
9	71172935	Level Bubble, FD, V51
10	71119058	Loadcell (3Kg), FD
11	71172916	Loadcell with Spiders(3kg), FD
12	71172938	Battery Bracket, FD, V51
13	71158353	Cable, Battery, FD,V51
14	71168359	Battery, Rechargeable, FD,V51
15	71167481	Gasket, FD
16	71167489	Housing, Bottom, FD
17	71172934	Cable, Adapter & Foot Switch,FD,V51
18	71172937	Seal, Adapter&Switch Socket, FD,V51
19	71169633	Accessory, Switch, Foot, FD,V51
20	71172941	Hardware Kit, FD, V31
21	71172933	LFT Sealing Kit, FD
22	71172939	Feet,4, Adjustable, FD, V31,V51
NS	71171503	Box, FD,V51
NS	80251005	Manual, Instr., EN,ES,FR_FD
NS	80251006	Manual, Instr., DE,IT_FD
NS	71172936	Pkg, Insert Kit, FD,V51
NS	80251394	Accessory, Case,Carry, Hard Shell_FD,V51
80	46001802	PWR,W,IN,10W,12VDC,S25x55x9x100,L
	46001780	Plug Set, AU/EU/UK/US



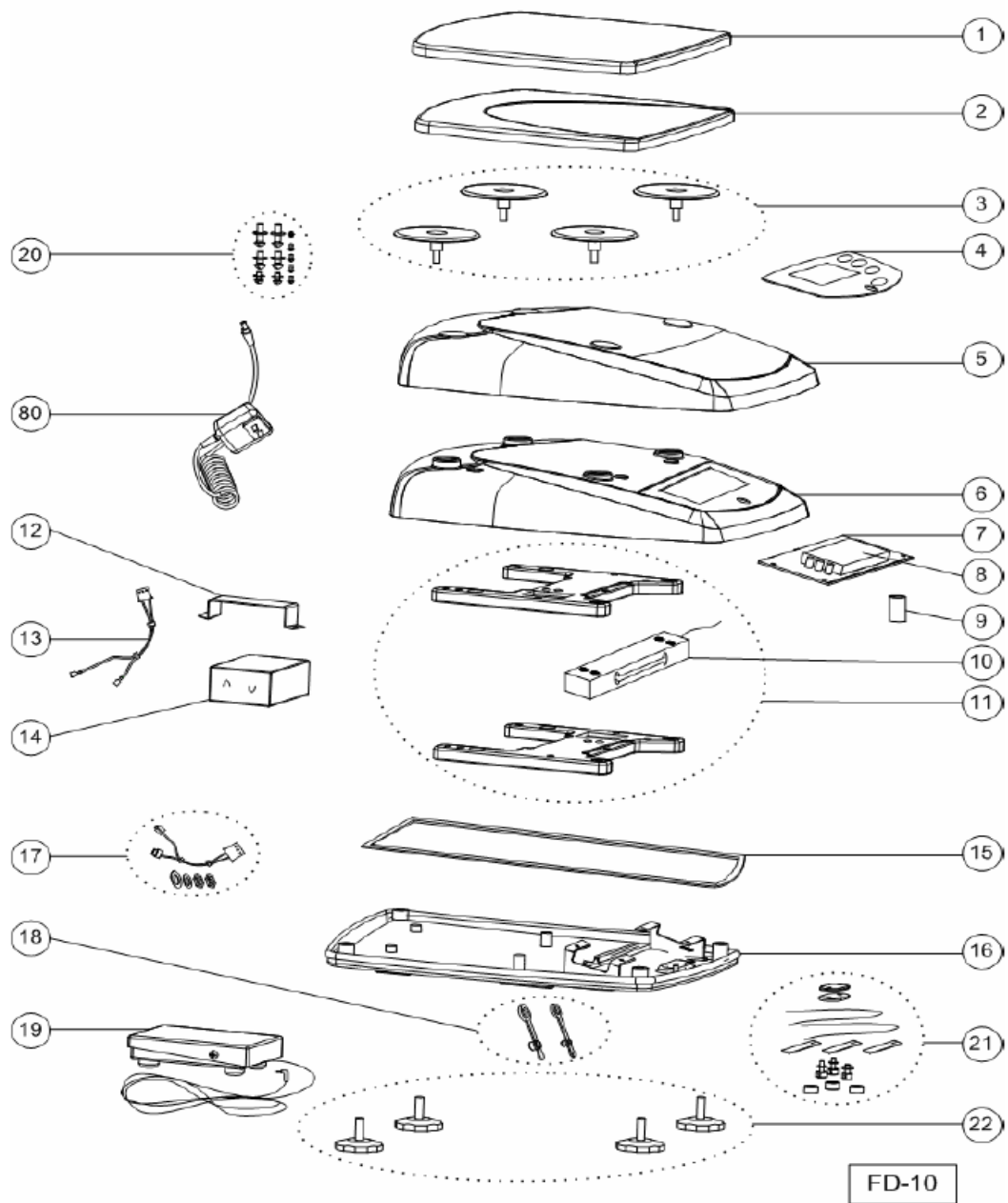
<u>Drawing Item</u>	<u>Part Number</u>	<u>Description</u>
1	80251141	Accessory, Pan, FD,V51
3	71172940	Pan Support caps(4), FD,V51
4	71169710	Switch, Membrane, FD
5	80251140	Accessory, Cover, In-Use, V51/FD
6	71172932	Hsg, Top, w/Membrane Switch, FD
7	72206151	PCB, Main, FDH,V51H
8	71158347	LCD Display, FD,V51
9	71172935	Level Bubble, FD, V51
10	72220183	Loadcell (3Kg), FDH,V51
11	72220187	Loadcell with Spiders(3kg), FDH,V51
12	71172938	Battery Bracket, FD, V51
13	71158353	Cable, Battery, FD,V51
14	71168359	Battery, Rechargeable, FD,V51
15	71167481	Gasket, FD
16	71167489	Housing, Bottom, FD
17	71172934	Cable, Adapter & Foot Switch,FD,V51
18	71172937	Seal, Adapter&Switch Socket, FD,V51
19	71169633	Accessory, Switch, Foot, FD,V51
20	71172941	Hardware Kit, FD, V31
21	71172933	LFT Sealing Kit, FD
22	71172939	Feet,4, Adjustable, FD, V31,V51
NS	71171503	Box, FD,V51
NS	80251005	Manual, Instr., EN,ES,FR_FD
NS	80251006	Manual, Instr., DE,IT_FD
NS	71172936	Pkg, Insert Kit, FD,V51
NS	80251394	Accessory, Case,Carry, Hard Shell_FD,V51
80	46001802	PWR,W,IN,10W,12VDC,S25x55x9x100,L
	46001780	Plug Set, AU/EU/UK/US



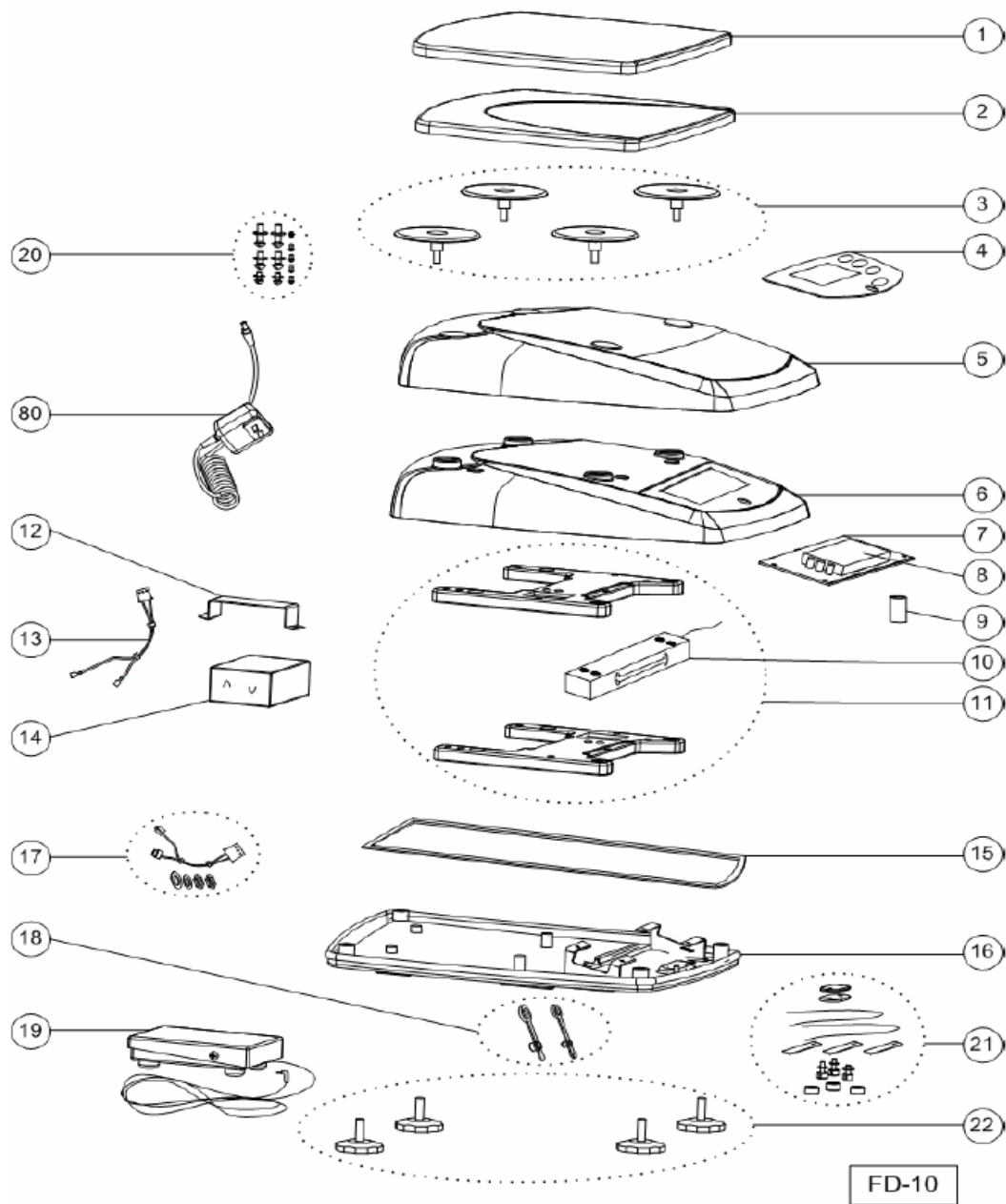
<u>Drawing Item</u>	<u>Part Number</u>	<u>Description</u>
1	80251141	Accessory, Pan, FD,V51
3	71172940	Pan Support caps(4), FD,V51
4	71169710	Switch, Membrane, FD
5	80251140	Accessory, Cover, In-Use, V51/FD
6	71172932	Hsg, Top, w/Membrane Switch, FD
7	71158350	PCB, Main, FD,V51
8	71158347	LCD Display, FD,V51
9	71172935	Level Bubble, FD, V51
10	71123142	Loadcell (6Kg), FD
11	71172917	Loadcell with Spiders(6kg), FD
12	71172938	Battery Bracket, FD, V51
13	71158353	Cable, Battery, FD,V51
14	71168359	Battery, Rechargeable, FD,V51
15	71167481	Gasket, FD
16	71167489	Housing, Bottom, FD
17	71172934	Cable, Adapter & Foot Switch,FD,V51
18	71172937	Seal, Adapter&Switch Socket, FD,V51
19	71169633	Accessory, Switch, Foot, FD,V51
20	71172941	Hardware Kit, FD, V31
21	71172933	LFT Sealing Kit, FD
22	71172939	Feet,4, Adjustable, FD, V31,V51
NS	71171503	Box, FD,V51
NS	80251005	Manual, Instr., EN,ES,FR_FD
NS	80251006	Manual, Instr., DE,IT_FD
NS	71172936	Pkg, Insert Kit, FD,V51
NS	80251394	Accessory, Case,Carry, Hard Shell_FD,V51
80	46001802	PWR,W,IN,10W,12VDC,S25x55x9x100,L
	46001780	Plug Set, AU/EU/UK/US



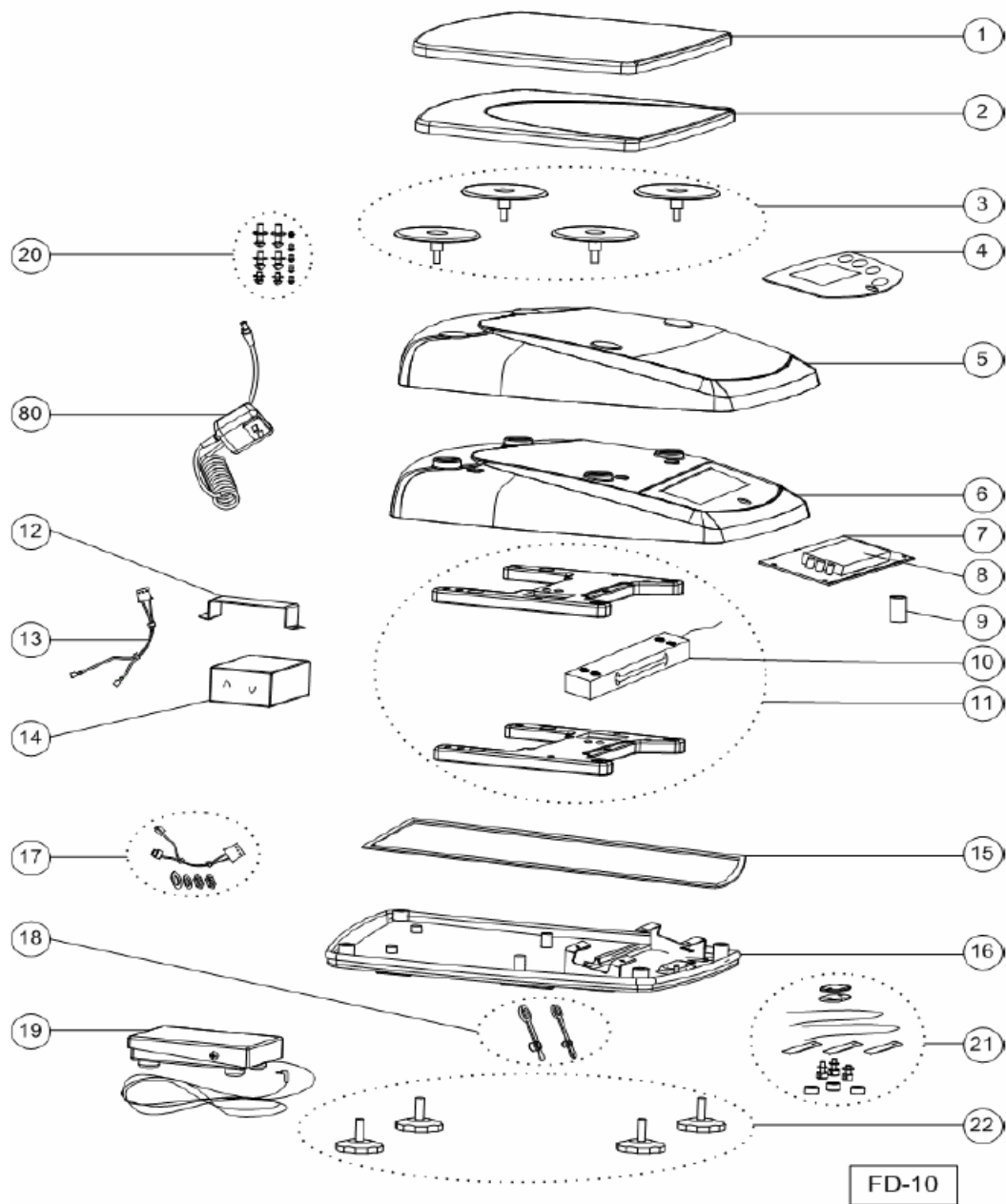
<u>Drawing Item</u>	<u>Part Number</u>	<u>Description</u>
1	80251141	Accessory, Pan, FD,V51
3	71172940	Pan Support caps(4), FD,V51
4	71169710	Switch, Membrane, FD
5	80251140	Accessory, Cover, In-Use, V51/FD
6	71172932	Hsg, Top, w/Membrane Switch, FD
7	72206151	PCB, Main, FDH,V51H
8	71158347	LCD Display, FD,V51
9	71172935	Level Bubble, FD, V51
10	72220184	Loadcell (6Kg), FDH,V51
11	72220188	Loadcell with Spiders(6kg), FDH,V51
12	71172938	Battery Bracket, FD, V51
13	71158353	Cable, Battery, FD,V51
14	71168359	Battery, Rechargeable, FD,V51
15	71167481	Gasket, FD
16	71167489	Housing, Bottom, FD
17	71172934	Cable, Adapter & Foot Switch,FD,V51
18	71172937	Seal, Adapter&Switch Socket, FD,V51
19	71169633	Accessory, Switch, Foot, FD,V51
20	71172941	Hardware Kit, FD, V31
21	71172933	LFT Sealing Kit, FD
22	71172939	Feet,4, Adjustable, FD, V31,V51
NS	71171503	Box, FD,V51
NS	80251005	Manual, Instr., EN,ES,FR_FD
NS	80251006	Manual, Instr., DE,IT_FD
NS	71172936	Pkg, Insert Kit, FD,V51
NS	80251394	Accessory, Case,Carry, Hard Shell_FD,V51
80	46001802	PWR,W,IN,10W,12VDC,S25x55x9x100,L
	46001780	Plug Set, AU/EU/UK/US



<u>Drawing Item</u>	<u>Part Number</u>	<u>Description</u>
1	80251141	Accessory, Pan, FD,V51
3	71172940	Pan Support caps(4), FD,V51
4	71169710	Switch, Membrane, FD
5	80251140	Accessory, Cover, In-Use, V51/FD
6	71172932	Hsg, Top, w/Membrane Switch, FD
7	71158350	PCB, Main, FD,V51
8	71158347	LCD Display, FD,V51
9	71172935	Level Bubble, FD, V51
10	71123141	Loadcell (15Kg), FD
11	71172918	Loadcell with Spiders(15kg), FD
12	71172938	Battery Bracket, FD, V51
13	71158353	Cable, Battery, FD,V51
14	71168359	Battery, Rechargeable, FD,V51
15	71167481	Gasket, FD
16	71167489	Housing, Bottom, FD
17	71172934	Cable, Adapter & Foot Switch,FD,V51
18	71172937	Seal, Adapter&Switch Socket, FD,V51
19	71169633	Accessory, Switch, Foot, FD,V51
20	71172941	Hardware Kit, FD, V31
21	71172933	LFT Sealing Kit, FD
22	71172939	Feet,4, Adjustable, FD, V31,V51
NS	71171503	Box, FD,V51
NS	80251005	Manual, Instr., EN,ES,FR_FD
NS	80251006	Manual, Instr., DE,IT_FD
NS	71172936	Pkg, Insert Kit, FD,V51
NS	80251394	Accessory, Case,Carry, Hard Shell_FD,V51
80	46001802	PWR,W,IN,10W,12VDC,S25x55x9x100,L
	46001780	Plug Set, AU/EU/UK/US



<u>Drawing Item</u>	<u>Part Number</u>	<u>Description</u>
1	80251141	Accessory, Pan, FD,V51
3	71172940	Pan Support caps(4), FD,V51
4	71169710	Switch, Membrane, FD
5	80251140	Accessory, Cover, In-Use, V51/FD
6	71172932	Hsg, Top, w/Membrane Switch, FD
7	72206151	PCB, Main, FDH,V51H
8	71158347	LCD Display, FD,V51
9	71172935	Level Bubble, FD, V51
10	72220181	Loadcell (15Kg), FDH,V51
11	72220185	Loadcell with Spiders(15kg), FDH,V51
12	71172938	Battery Bracket, FD, V51
13	71158353	Cable, Battery, FD,V51
14	71168359	Battery, Rechargeable, FD,V51
15	71167481	Gasket, FD
16	71167489	Housing, Bottom, FD
17	71172934	Cable, Adapter & Foot Switch,FD,V51
18	71172937	Seal, Adapter&Switch Socket, FD,V51
19	71169633	Accessory, Switch, Foot, FD,V51
20	71172941	Hardware Kit, FD, V31
21	71172933	LFT Sealing Kit, FD
22	71172939	Feet,4, Adjustable, FD, V31,V51
80	71143794	Adapter, JP, PSE, CD,FD,T31,TC,TR
NS	71171503	Box, FD,V51
NS	80251005	Manual, Instr., EN,ES,FR_FD
NS	80251006	Manual, Instr., DE,IT_FD
NS	71172936	Pkg, Insert Kit, FD,V51
NS	80251394	Accessory, Case,Carry, Hard Shell_FD,V51
80	46001802	PWR,W,IN,10W,12VDC,S25x55x9x100,L
	46001780	Plug Set, AU/EU/UK/US



Drawing Item	Part Number	Description
1	80251141	Accessory, Pan, FD,V51
3	71172940	Pan Support caps(4), FD,V51
4	71169710	Switch, Membrane, FD
5	80251140	Accessory, Cover, In-Use, V51/FD
6	71172932	Hsg, Top, w/Membrane Switch, FD
7	72206151	PCB, Main, FDH,V51H
8	71158347	LCD Display, FD,V51
9	71172935	Level Bubble, FD, V51
10	72220182	Loadcell (30kg), FDH,V51
11	72220186	Loadcell with Spiders(30kg), FDH,V51
12	71172938	Battery Bracket, FD, V51
13	71158353	Cable, Battery, FD,V51
14	71168359	Battery, Rechargable, FD,V51
15	71167481	Gasket, FD
16	71167489	Housing, Bottom, FD
17	71172934	Cable, Adapter & Foot Switch,FD,V51
18	71172937	Seal, Adapter&Switch Socket, FD,V51
19	71169633	Accessory, Switch, Foot, FD,V51
20	71172941	Hardware Kit, FD, V31
21	71172933	LFT Sealing Kit, FD
22	71172939	Feet,4, Adjustable, FD, V31,V51
NS	71171503	Box, FD,V51
NS	80251005	Manual, Instr., EN,ES,FR_FD
NS	80251006	Manual, Instr., DE,IT_FD
NS	71172936	Pkg, Insert Kit, FD,V51
NS	80251394	Accessory, Case,Carry, Hard Shell_FD,V51
80	46001802	PWR,W,IN,10W,12VDC,S25x55x9x100,L
	46001780	Plug Set, AU/EU/UK/US